

INFLUENCE OF DEGREE OF THICKNESS REDUCTION RATIO ON DEVELOPMENT OF STRUCTURE IN THE STEEL 1.5710

GREGER Miroslav¹, PETRŽELA Jiří², LÁSZLÓ Vladimír², HORSINKA Jaromír², MAŠEK Václav³, DLUGOŠ Ivan¹

¹VSB - Technical University Ostrava, Ostrava, Czech Republic, EU, miroslav.greger@vsb.cz

²VÍTKOVICE HEAVY MACHINERY, a.s., Ostrava-Vítkovice, Czech Republic, EU, jiri.przela@vitkovice.cz

³Trading Universal s.r.o., Plzeň, Czech Republic, EU, TRADE25@seznam.cz

Abstract

Intensity of structural changes during forging is usually determined in dependence on the forging ratio. Forging ratio at elongation is most often calculated with use of simple relations, which are based on the change of cross-section of the forged pieces. The intensity of structure development is influenced not only by the simple change of cross-sections, but also by relative length of the stroke, magnitude of deformation in individual passes, manner of edging, temperature, friction and shape of anvils. The paper gives an analysis of influence of the relative length of the stroke on the forging ratio.

Keywords: Forging, relative length of the stroke, forging ratio

1. INTRODUCTION

The quality of large forgings is influenced not only by metallurgical factors of forging, such as the use of ingot, heating, forming temperatures, forging ratio etc., but also by technological factors, the significance of which not only in their impact on the quality of forgings, but mainly on economy issues. Especially in the case of forgings with complicated shape it is important to determine the optimal technological principles for their production, so that the required shape of the forged piece is achieved together with good quality with optimal consumption of metal and at economic production costs [1].

In many cases it is in the case of forgings with complicated shape more advantageous to manufacture a forged piece with technological material allowance with larger metal consumption and lower processing costs, rather than laboriously manufacture forged piece with complicated shape accompanied by large capacity loss of the forging shop and by high production costs [2].

So far published guidelines for the optimal shape range for production of large forgings are very limited and they do not provide the necessary picture of the optimal shape of the forged piece. Production possibilities of forging are then usually often overestimated and production costs are higher than in the case, when a forged piece of simpler shape is manufactured with technological material allowance [3].

The following technological principles are an attempt to express mathematically the major factors, according to which it is appropriate to carry out production of open-die forged pieces. Majority of those principles was prepared on the basis of operational experience of Czech forging shops and also of international literary references [4, 5].

Mathematical expression of technological principles is based especially on empirical experience of forging shops and it therefore makes no demands to the exactness of expression. Each of the presented principles would require for exact expression a deeper theoretical analysis and particularly numerous industrial measurements and model experiments and mathematical simulations.

2. SHAPE OF ANVILS

The anvils used at forging can be basically divided into: straight, angular and shaped. At manufacture of large forged pieces by direct elongation of the ingot it is the most advantageous to use straight anvils, while the elongation should be performed by re-forging of the multi-edge ingot into an octagonal forged piece followed by gradual change of its shape into the square. Forging of circular forged pieces of cross-sections by direct elongation from the ingot should also be performed by re-forging of the ingot into a square forged piece followed by its final shaping into a circular cross-section [6]. This last operation, i.e. the change of the square cross-section into a circular one, should be performed with a minimum elongation.

At forging of circular cross section forgings it is not appropriate to use only straight anvils, since tensile stresses are formed in the central part of the forged piece, which may contribute to crack formation. When docking the circular cross sections, it is advantageous, especially in steels with low formability, to use angular or shaped anvils. For steels less susceptible to cracking it is possible to use a combination of anvils in such a way that the upper anvil is straight, the bottom is angular or shaped. This combination of anvils is most commonly used in forging shops at forging of circular rods from large ingots.

The shape of anvils affects the uniformity of deformation in cross-section of the re-forged blank. Longitudinal deformation at cross section of the forged piece is significantly uneven when straight anvils are used, while it is much more uniform when angular anvils are used. The optimum forming procedure takes place under conditions when the maximal deformation in the forged piece axis is and there are no cracks formed on its surface. This condition is best met by angular anvils with the angle of 110 °. When shaped anvils are used for forging of circular rods, the ratio of the radius R_v to the radius of curvature of the cut-out of the shaped anvil R_{ko} is very important. An ideal situation occurs when $R_v = R_{ko}$.

When this condition is met, the contact surface of the anvil with the forged piece is the largest, the spreading is minimal and formation of tensile stresses on the surface and in the axis of the forged piece is restricted [7]. An unfavourable state of stress occurs when $R_{ko} > R_v$. The contact surface of the anvil is minimal and forging approaches adverse ratios at forging of forged pieces of circular cross sections on straight anvils. That's why it is advisable to select the size of the shaped anvil at the start of forging in such a way that $R_v \approx R_{ko}$, and to complete the forging at the ratio $R_v \geq R_{ko}$. The largest diameter D of the initial blank that can be forged in angular anvils with the radius equal to the half of curvature r and a with the vertex angle β is limited by the relation:

$$D = 2 \sqrt{\frac{S_k \cdot K}{\pi}} \quad (1)$$

where S_k is the area of the anvil cut-out; $S_k = r^2 \left(2tg\frac{\beta}{2} + \pi - \beta \right)$, K is the degree of elongation in one pass; r is the radius of the anvil curvature, β is the vertex angle between the tangents to the radius of the cut-out r curvature, S_o is the initial cross-section, S_i is the forged piece cross-section after elongation.

2.1. Width of anvils, length of stroke and forging ratio

Used width of anvils at elongation influences the evenness of deformation, thickness reduction ratio of steel in the forged piece axis and the intensity of elongation. When narrow anvils are used, **Fig. 1a**, although the spreading is small, elongation is effective, but there is the danger of imperfect penetration of deformation in the ingot axis. When very large anvils are used, **Fig. 1b** (or at elongation with large relative length of the stroke) the penetration of deformation in the forged piece axis is indeed guaranteed, however, in the case of straight anvils the spreading is considerable and intensity of elongation is small.

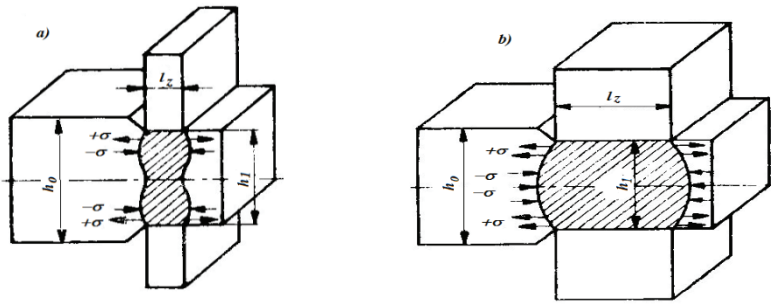


Fig. 1 Influence of the width of anvils on thickness reduction ratio of steel in the forged piece axis:
a) shape of the deformation zone at elongation with use of narrow anvils,
b) at elongation with use of broad anvils

It has been proven experimentally that the optimum width of straight anvils should be within the range from 0.5 to 0.7 of the initial height of the forged piece, which can be described by the so-called relative length of the stroke by the relation:

$$\frac{l_z}{h} = 0,5 - 0,7 \quad (2)$$

where l_z = length of stroke; ($l_z \approx 0.8 B$; B is the anvil width), h is the initial height (or diameter D) of the forged piece.

At bigger anvil width a considerable unevenness of deformation along the forged piece cross-section takes place, when true strain in the forged piece axis is significantly bigger than the average strain determined from the relation:

$$\varepsilon_h = \frac{h_0 - h_1}{h_0} \quad (3)$$

where h_0 is the height of the forged piece before the deformation, h_1 is the height after deformation.

For calculation of the forging ratio by elongation it is possible to use two well known relations, based on the change of cross-section of the elongated forged piece. The first relation, used most frequently in the forging shops, can be described by the following equation:

$$K = \frac{S_0}{S_1} = \lambda \quad (4)$$

In dependence on the magnitude of the applied strain and on the relative length of stroke it is possible to use for determination of the forging ratio by elongation also this relation:

$$K = \frac{1}{1 - \varepsilon_h (1 - f)} \quad (5)$$

where ε_h is the magnitude of deformation, f is the coefficient of spreading at elongation.

The coefficient of spreading depends on the relative width stroke l_z/b_i (**Fig. 2**). The coefficient of spreading in dependence on the relative stroke at forging in angular anvils with the angle $\beta = 120^\circ$ is given in the second row, at forging on straight anvils it is in the third row of **Table 1**.

Table 1 Dependence of the coefficient of spreading f on the relative width of stroke l_z/b_i

l_z/b_i	0.3	0.4	0.5	0.6	0.7	0.8	1.0	1.2	1.4
$f_{angular}$	-	0.01	0.025	0.04	0.06	0.75	0.11	0.12	0.16
$f_{straight}$	0.13	0.17	0.20	0.24	0.25	0.27	0.32	0.36	0.41

For calculation of relative spreading β^* at elongation on straight anvils it is possible to use the relation:

$$\beta^* = \frac{b_i - b_{i-1}}{b_{i-1}} = \frac{1}{\lambda(1 - \varepsilon_h)} - 1 \quad (6)$$

where b_i is the blank width in the zone of deformation after applied strain, b_{i-1} is the blank width in the zone of deformation before the applied strain

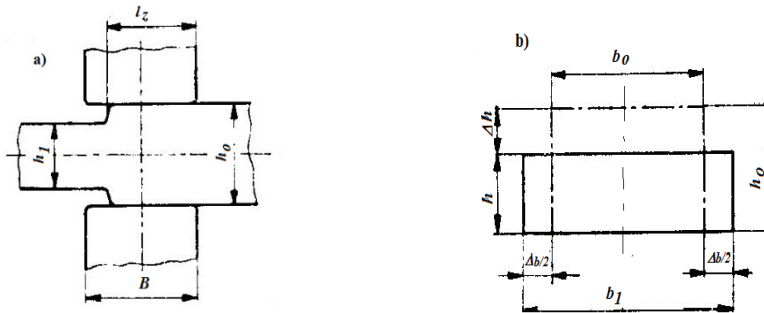


Fig. 2 Diagram of the forged piece elongation: a) anvil width B and length of stroke l_z , b) change of the cross-section

3. STRAIN PENETRATION AT ELONGATION

The relative length of stroke l_z/h_i affects the depth of strain penetration during elongation. The influence of the relative length of stroke l_z/h and the influence of the forging ratio on development of structure in the steel 1.5710 at elongation on straight anvils was experimentally verified.

The experiments were performed on 15 kg laboratory ingots. Average dimensions of the ingot cross-section were 90 x 90 mm. Chemical composition of steel is given in **Table 2**.

Table 2 Chemical composition of steel 1.5710, mass%

C	Mn	Si	Cr	Ni	V	Al
0.38	0.65	0.30	0.80	1.25	0.001	0.006

The relative length of stroke was approx. 0.6. The forging ratio was determined according to the relation (5) and it was within the interval from 1 to 4. The forging was carried out in the temperature range from 1050 to 950 °C. The forged pieces were after docking annealed at 600 °C for 2 hours, they were cooled down on air, and samples for metallographic analyses were taken from them. The samples for metallographic analyses were taken perpendicularly to the forged pieces longitudinal axis. Due to small size of the experimental forged pieces no analysis of structure size carried along the height of the elongated samples was made. Development of structure in the forged pieces axis in dependence on the forging ratio is shown in **Fig. 3**. Although considerable attention is paid to investigation of the influence of forging ratio on the structure and mechanical properties of forged pieces resulting from it, we currently see also discussing works concerning the influence of the forging ratio on the structure and properties of forged pieces, as well as those concerning the calculation of the forging ratio. All the studies conducted so far clearly evidenced that it is possible to refine the structure by the better (not higher) forging ratio and thus improve also the properties of forged pieces, such as ductility, thinning and notch toughness.

It is evident from **Fig. 3** that the forged piece structure gets significantly refined from the forging ratio around the value of 4 (**Fig. 3d**), although the forging shops operate mainly with the value of 3. If an upsetting operation is included into the technology of forging of longitudinal forged pieces, it has been unequivocally proven that the upsetting effect on the development of structure and thus also on an enhancement of the mechanical properties is not equivalent to the impact of the thickness reduction ratio achieved by elongation of the forged piece, it means by reduction of the cross-section of the forged piece in respect to the ingot cross section.

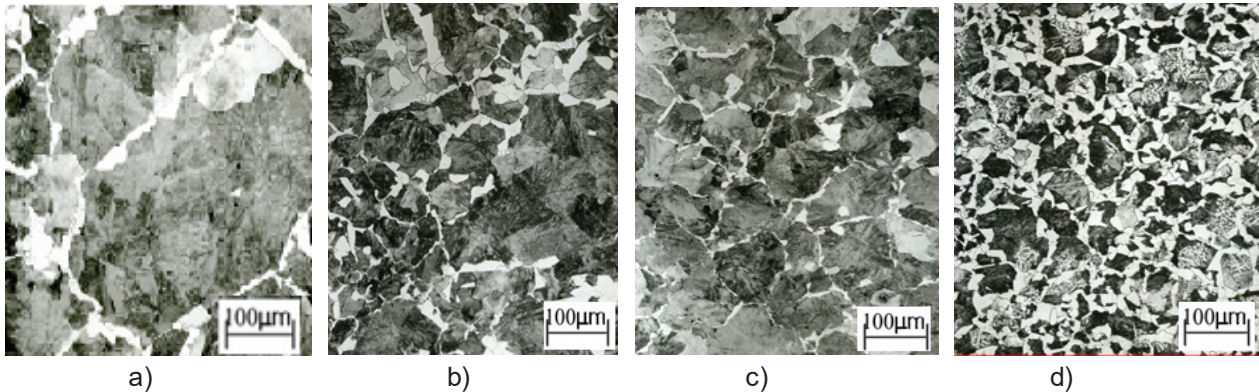


Fig. 3 Development of structure of the steel 1.5710 in dependence on the degree of thickness reduction ratio: a) $K = 1$; b) $K = 2$; c) $K = 3$; d) $K = 4$.

4. CONCLUSIONS

Due to the fact that for the assessment of production technology the forging shops got used to determination of the forging ratio, while for the pieces forged by elongation the minimum value is set to 3, it is necessary also for the pieces produced with use of upsetting operation to determine such a calculation of the total degree of forging ratio, which would correctly take into account the effect of upsetting. It is only natural that for determination of this calculation it is necessary to use simplified assumptions, since calculation of the forging ratio gives only an average value due to an unevenness of deformation in the formed forged piece.

ACKNOWLEDGEMENTS

This work was created at solution of the project funded by the Technology Agency of the Czech Republic, No. TA04010705 project and the project No. LO1203 "Regional Materials Science and Technology Centre - Sustainability Program," funded by the Ministry of Education, Youth and Sports of the Czech Republic.

REFERENCES

- [1] SHEIKHI S. Latest developments in the field of open die forging in Germany. *Stahl und Eisen*, Vol. 129, No. 4, 2009, pp. 33-37.
- [2] 2009, pp. 33-37.
- [3] KAJTOCH J. Strain in the upsetting process. *Metallurgy and foundry engineering*, Vol. 33, No. 1, 2007, pp. 51-61.
- [4] RECKER D., FRANZKE M., HIRT G. et al. Grain size prediction during open die forging processes. *La Metallurgia Italiana*, No. 9, 2010, pp. 29-35.
- [5] KUKUYRK B. Optimization of open die forging of big ingots. In *Formability '94: The 6th International Conference on Formability*. Ostrava: Tanager, 1994, pp. 595-602.
- [6] SHAH K. N., KIEFER B.V., GAVIGAN J. J. Finite element simulation of internal void closure in open-die press forging. *Advanced Manufacturing Processes*, 1986, Vol. 1, pp. 501-516.
- [7] GREGER M., PETRŽELA J., LÁZLÓ V., JUHAS M. Analysis of new technology forging monolithic forged bottoms. In *METAL 2013. 22nd International Conference on Metallurgy and Materials*. Ostrava: TANGER, 2013.
- [8] KATO K., ROWE G. W., STURGESS C.E. et al. Classification of deformation modes and deformation property diagram in open die forging. *Journal of the Japanese Society for the Technology of Plasticity*, Vol. 28, 1987, pp. 67-74.